

Aluminum Profile TUBE Model - 2 Meters



Product code:

Reference: 2835

Technical specifications:

REFERENCE: 2835

Construction Material: Aluminium+PC

Certifications: CE - ROHS

Dimensions (mm): Ø295xL2000

Product short description:

With our **TUBE aluminum profile**, you will get the effect of continuous tube to hang, or on your walls and surfaces. This aluminum profile allows the placement of high brightness strips, due to its dissipative effect for the **LED strip**, you will get to extend the life of your LED strips. It can be hung with our accessory > Suspension Kit for luminaires.

Product description:

Aluminum Profile TUBE Model - 2 Meters

The **TUBE LED aluminum profile** allows a quick installation by having easy access to the **LED strip**. The aluminum profile is specially designed to incorporate high brightness LED strips and achieve spectacular effects in the **decoration** and **lighting** of any desired space.

With them a simple room will turn it into a unique work of art that completes the linear forms.

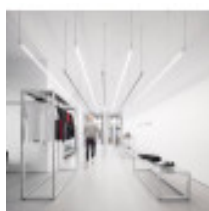
Our LED profiles are suitable for different decoration applications such as creating recessed light lines in any type of material, marking stair steps, lighting showcases and shelves, kitchen cabinets, aesthetic solutions in bathrooms, railings, etc. The only limit is your imagination.

Applications of the Aluminum Profile TUBE Model

- Hotels
- Libraries
- Bar
- Home
- Furniture
- Shops
- Restaurants
- Roofs

At FactorLED we ensure that our products have quality guarantee and offer all the necessary elements for DISTRIBUTION, IMPORT or WHOLESALER, including the technical sheet of each LED product.

Additional images:



Technical Datasheet

