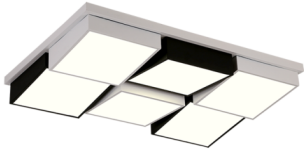


## LED Ceiling Light Surface 90W - DORTMUND - CCT Remote control



### Product code:

Reference: PF8028

### Technical specifications:

REFERENCE: 8028  
Rated Power : 90w  
Nominal Voltage: 220-240V  
Colour: 3000K - 4000K - 6000K  
CRI - Chromatic Rendiment Index: 80  
Construction Material: Steel +PC  
Luminosity-Lm: 9000 Lm  
Number & Type of LEDs: SMD 2835  
Beam Angle (°): 120°  
Luminous diodo LED (Lm/W): 115Lm/W  
Luminous Efficiency (Lm/W): 100Lm/W  
Dimmable: YES  
Certifications: CE - ROHS  
IP : IP20  
Diode Life Expectancy (H): 40.000  
Dimensions (mm): 920mm \* 625mm \* (H130mm (100mm))  
Frequency (Hz): 50/60Hz  
Temperature Range (°C): -20°C ~ +55°C  
On/Off Cycles: 100.000  
Starting Time (s): 0,2s  
Control modes: CONTROL + INFRARED  
Driver included: YES  
Energy Rating (2021-UE-2019/2015): A+  
Energy Rating (2023 - UE-2019/2015): F  
Warranty Years: 2  
Range (m): 4 m.

### Product short description:

**LED surface light** made of **steel**, the light expands uniformly throughout the space. With a white finish and high power of **90w**, is a product especially suitable for high ceilings. It is a type of **CCT Downlight (color change) by on**, can control the color temperature via its remote control.

### Product description:

LED Ceiling Light Surface 90W - DORTMUND - CCT Remote control

Our circular **Ceiling Light Surface** stands out for its elegant and modern aspect, it is made of steel. It has a power of **90w**, is a product specially indicated to highlight architectural spaces of spectacular design.

It reproduces ideal environments with a high brightness illumination, from cold to warm. It is an **indoor luminaire**, as it has an **IP20**.

With this **Downlight** you can reduce energy savings of up to 80%. It is considered a non-polluting product, as it has an energy class **A+**.

The light is distributed evenly throughout the area as it includes an opal housing and a angle of **120°**. Thanks to its avant-garde and select design can create sophisticated environments and remarkable lighting.

Its **variety** of **colour temperature** tones (**3000k-4000k-6000k**) adapt to any space, so the luminaire is customized to meet the needs of each user. The **control** is through of the **remote control**.

**Easy to install** and with quality assurance. Now the installation and the handling of the product is more comfortable, obtaining that the adaptation to the **surfaces** is more precise and in a minor time.

### Applications of the LED Ceiling Light Surface 90W - DORTMUND - CCT Remote control

Its applications can be very diverse, but to highlight some, would be the **lighting** of:

- Businesses and Offices
- Bathrooms and kitchens
- Corridors, terraces

# Technical Datasheet

- Porches or basements
- Roofs

At FactorLED we ensure that our products have a **QUALITY** guarantee and offer all the necessary elements for **DISTRIBUTION**, **IMPORT** or **WHOLESALE**, including the technical data sheet of each LED product.

## Additional images:

