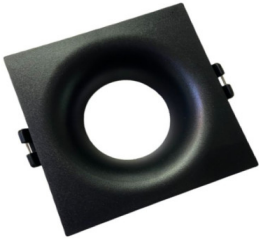


## Fixed Ring for Square Black Dichroic GU10-MR16



### Product code:

Reference: 91812

### Technical specifications:

REFERENCE: 7207  
Construction Material: Steel  
Certifications: CE  
Dimensions (mm): 88\*88mm

### Product short description:

**Square fixed ring** with a minimalist design that offers the possibility of quickly and easily installing all our halogen bulbs or any **GU10** product. **Its minimalist and avant-garde aesthetics** make it an ideal choice for enhancing elegance in spaces such as living rooms, bedrooms, bathrooms, or offices.

This **black ring** not only fulfills an exceptional functionality but also adds a touch of sophistication to any environment in which it is installed.

### Product description:

Square Fixed black Ring for GU10-MR16 Dichroic

The **fixed black ring** for **GU10** is an elegant and functional lighting accessory, designed to provide a flexible and precise lighting solution indoors.

The **black square frame** for GU10 and MR16 LED dichroic modules features a sleek finish that seamlessly integrates into any interior decor, adding a touch of sophistication. Additionally, its compact size and lightweight design make it easy to install and handle.

Made of **aluminum** with a **matte chrome finish**, the ring exudes elegance. It is recommended for use with GU10 or MR16 dichroic lamps, making it perfect for new constructions or replacing spotlights.

These accessories are ideal for **installation in indoor false ceilings** or drywall, requiring a simple cut for recessed mounting. What's practical about using this type of ring is the quick and easy replacement of the bulb without the need for a complete reinstall.

#### Key Features:

- Its minimalist and avant-garde aesthetic not only meets the most demanding aesthetic standards but also makes it the perfect choice for enhancing elegance in a variety of spaces. From living rooms to bedrooms, bathrooms, and offices, this fixed ring gracefully adapts to any environment, enhancing the atmosphere with its sophisticated presence.
- Technical features highlight its durability and efficiency. Manufactured with high-quality materials, it ensures a long lifespan and optimal performance. Furthermore, the ability to install various dichroic bulbs and GU10 products expands lighting options, allowing for complete customization based on user preferences.

At FactorLED, we ensure that our products come with a **QUALITY GUARANTEE** and provide all the necessary elements for **DISTRIBUTION, IMPORT, or WHOLESALE**, including the technical specifications for each LED product.

### Additional images:

# Technical Datasheet

---

